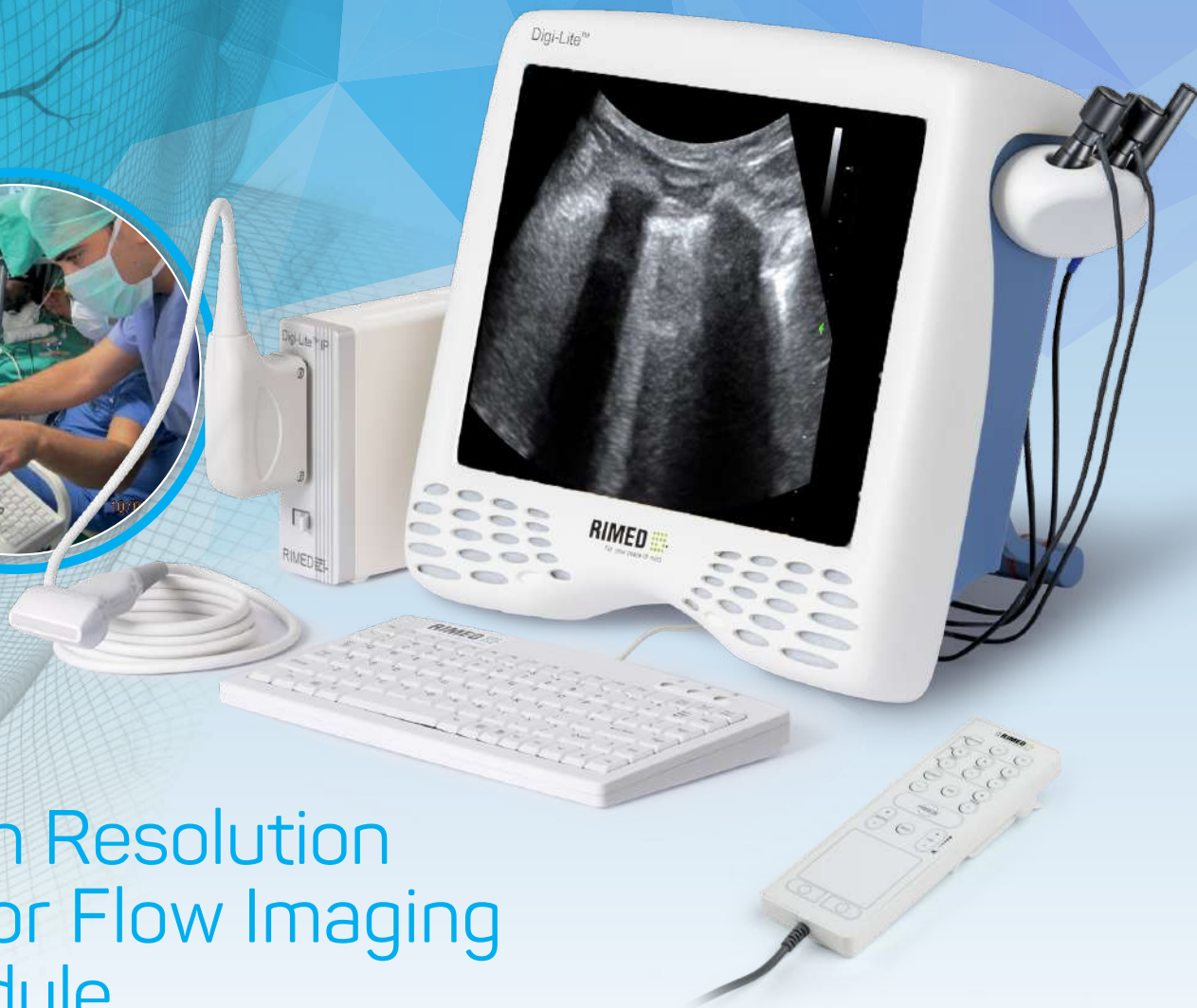


Digi-Lite IP+™



High Resolution Color Flow Imaging Module

for Complete Intracranial, Extracranial and
Lungs Ultrasound Investigation

Setting new standards for safe innovative
diagnostics, and cerebrovascular monitoring.

RIMED 
For your peace of mind



Digi-Lite IP+™

High Resolution Color Flow Imaging

Module for Complete Intracranial, Extracranial and Lung Investigation



High Sensitivity Color Flow Imaging Device

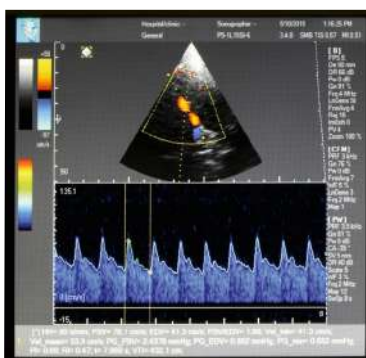
Digi-Lite IP+™ color flow imaging module enables accurate diagnosis of possible vascular disorders within both cerebral and carotid arteries, and supports wide area of clinical applications. Combined with Digi-Lite™, the device provides clinicians with an all-in-one solution to quickly, and accurately perform investigational techniques in both the intracranial and extracranial blood vessels allowing a combined report for both devices

Cost-Effective and Easy-to-Operate

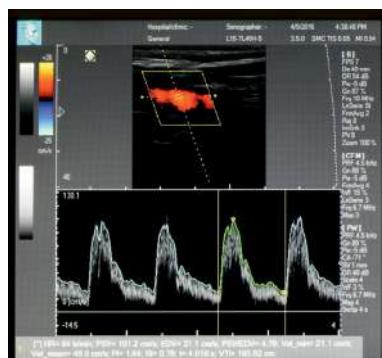
Digi-Lite IP+ is a compact, cost-effective and integrated solution for the ICU, modern neurosonology and neurovascular labs. The easy-to-operate Digi-Lite IP+ enables the clinician to scan the carotid system, extracranial vertebrals, the ocular system for ONSD and intracranial cerebrovascular system in a complete triplex mode including B Mode, Color flow and Doppler.

Key Features:

- High resolution imaging for fast and accurate diagnosis
- Dedicated software integrated into Digi-Lite™
- Custom probes for different clinical applications including extra and intracranial stenosis



Intracranial MCA



Normal CCA

Lung Ultrasound

Using Digi-Lite IP+™

The high-resolution color flow imaging device, Digi-Lite IP+™, enables quick diagnosis of possible vascular disorders in the cerebrovascular and carotid arteries.

There is emerging evidence that lung ultrasound maybe a useful aid in the diagnosis of COVID-19 as it has high sensitivity for detection pleural thickening, subpleural consolidation, and ground-glass opacity. It has the advantages of portability, bedside evaluation, reduced healthcare worker exposure, and repeatability during follow-up.

An external module for a complete extracranial investigation, Digi-Lite IP+ supports a wide range of clinical applications.

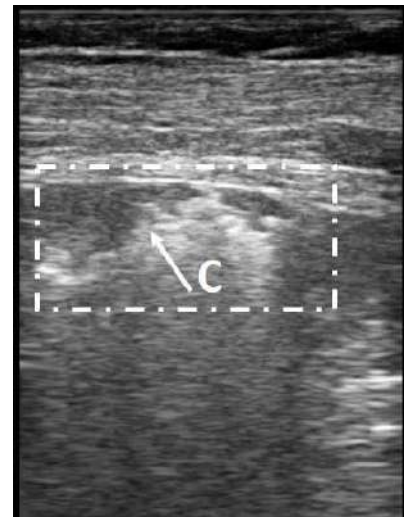
Combining a high-sensitivity color flow imaging device with Rimed's Digi-Lite or Digi-One device, Digi-Lite IP+ provides clinicians with an all-in-one solution to quickly and accurately perform investigational techniques in the intracranial and extracranial blood vessels.

New!

You can now use our Digi-Lite IP+ for lung ultrasound as it enables the very much in demand lung ultrasound examination to support the diagnosis of COVID-19



B lines and irregularities of the pleural line



Sub-pleural consolidations



Inhomogeneous hyperechogenicity of the hepatic parenchyma (L) in comparison with the renal parenchyma (K)



Pleural thickening